



**April 5, 2021**



**The Revised Concession Agreement will provide better water service to Metro Manila and is very Advantageous to the National Government and Consumer**

**MODELED AFTER THE NEW CLARK CITY  
JOINT VENTURE AGREEMENT OF THE**



**AS ADVISED BY THE**



## **1. Removal of government non-interference clauses.**

Government will no longer be liable when fulfilling its regulatory functions to protect the consumer.

---



**2. Recognition of Manila Water as a public utility**, which makes it more accountable to the government and the public.

---

## Advantage to the National Government

3. Removal and addition of provisions that unduly compromise medium and long term government liabilities (contingent liabilities), such as:

a. Removal of the National Government's Performance Undertaking for future debt

b. All debt and expenditures of the Concessionaire **MUST be reviewed and approved by the Regulatory Office**

---

## Advantage to the National Government

c. All fully recovered assets are immediately transferred to the government to ensure there is no double payment at the end of the contract

d. Material Government Adverse Action (MAGA) is limited only to actions of the Executive so that the National Government is not liable for things outside of its control

---

## Advantage to the Consumer

1. Corporate Income Tax CANNOT be charged to the consumer, unlike the previous Concession Agreement.
  2. There is a Tariff Freeze until December 31, 2022.
-

## Advantage to the Consumer

3. The tariff adjustment for inflation will only be 2/3 of the Consumer Price Index unlike the previous contract which had a 100% inflationary impact.

4. Removal of the Foreign Currency Differential Adjustment (FCDA) which will result in the much lower tariff increases and protect the consumer from possible tariff spikes because of foreign exchange movements.

---

# IATF Resolution No. 108-A

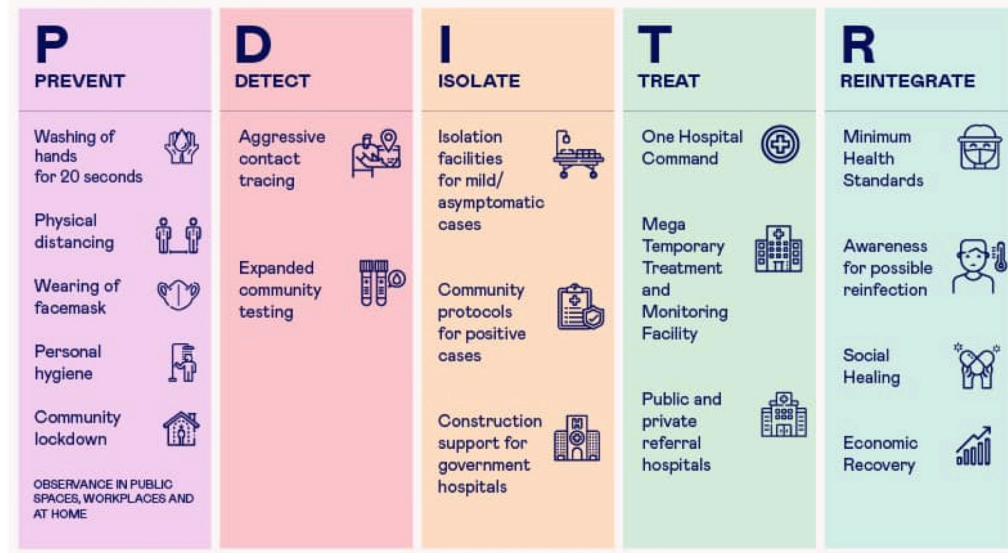
**ECQ**

*April 5 to April 11, 2021*

**National Capital Region  
Bulacan  
Cavite  
Laguna  
Rizal**



# IATF Resolution No. 108-A



Daily monitoring and reporting of the National Task Force Against COVID-19 and its Implementers, and other accountable national government agencies

# IATF Resolution No. 108-A



Increase dedicated COVID-19 beds in isolation, quarantine, and health facilities through the joint effort of the DepEd, MMDA, and DPWH:



Ensure that there are **adequate number** of COVID-19 dedicated beds, complementary health human resources, and well-coordinated triage and referral systems in place at LGUs, isolation and quarantine facilities, and health facilities;

---



# Quezon Institute Modular Hospital



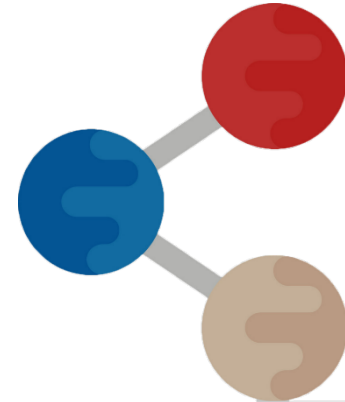
# Quezon Institute Modular Hospital



# IATF Resolution No. 108-A



**Improve efficiency of contact tracing**  
by increasing its capacity through the  
utilization of personnel from the DND  
and/or DILG, and the DOLE to  
supplement contact tracing efforts



**Intensify enforcement of current protocols and guidelines in the local level**, through the review of existing local ordinances and executive orders to provide for the imposition of other forms of penalties such as community service.

---





# IATF Resolution No. 108



Office of the Civil Defense is authorized to procure using their Quick Response Fund an initial **500,000 pieces** of any of the following **Rapid Antigen Test Kits** authorized by the FDA:

Standard Q COVID-19 Ag Test manufactured by SD Biosensor, Inc.,

Panbio COVID-19 Ag Rapid Test Device manufactured by Abbot.

Wondfo 2019-nCoV Antigen Test (Lateral Flow Method)  
manufactured by Guangzhou Wondfo Biotech Co., Ltd

Such other Antigen Test Kits which may be  
approved by the abovementioned authorities



*Shall be used in the provinces of Pampanga and Batangas, in addition to NCR Plus*

# IATF Resolution No. 108



## **Adopted the joint recommendations of DOLE and DTI**

Intensifying the enforcement and monitoring of compliance to the minimum public health standards in the workplaces

Rolling out of the Safety Seal Certification Program

Encouraging citizenry reporting of non-compliant establishments through available government channels

---

**APPROVED**

**Region VI to temporarily suspend inbound passenger travel** from the National Capital Region and the provinces of Bulacan, Cavite, Laguna, Rizal, Cebu City, and Davao City to said Region until April 10, 2021

---



## Under ECQ

Establishments, persons, or activities are allowed to operate, work, or be undertaken

### With full on-site capacity:

- Health, emergency and frontline services – ***HMOs, health insurance providers, disaster risk reduction management officers, and public safety officers and the like***
  - Essential retail trade and service establishments – ***hardware, office supplies, bicycle shops***
  - ***Public transport providers and operators.***
-

## Under ECQ

Establishments, persons, or activities are allowed to operate, work, or be undertaken

### **Skeleton on-site capacity:**

- ***Janitorial/sanitation services and facilities***
  - ***Establishments engaged in repair and maintenance of machinery and equipment, for households and essential permitted establishments***
  - ***Establishments engaged in repair and maintenance of motorized and non-motorized vehicles, including the sale of spare parts***
-

## Under ECQ

Establishments, persons, or activities are allowed to operate, work, or be undertaken

### **Skeleton on-site capacity:**

- ***Teachers, professors and other staff for purposes of conducting online/ offline, and flexible classes, completion of grades, and processing of student credentials, requirements and documents***
  - ***Lawyers who will provide legal representation necessary to protect rights of persons as well as legal services for permitted establishments***
-

## Under MECQ and GCQ

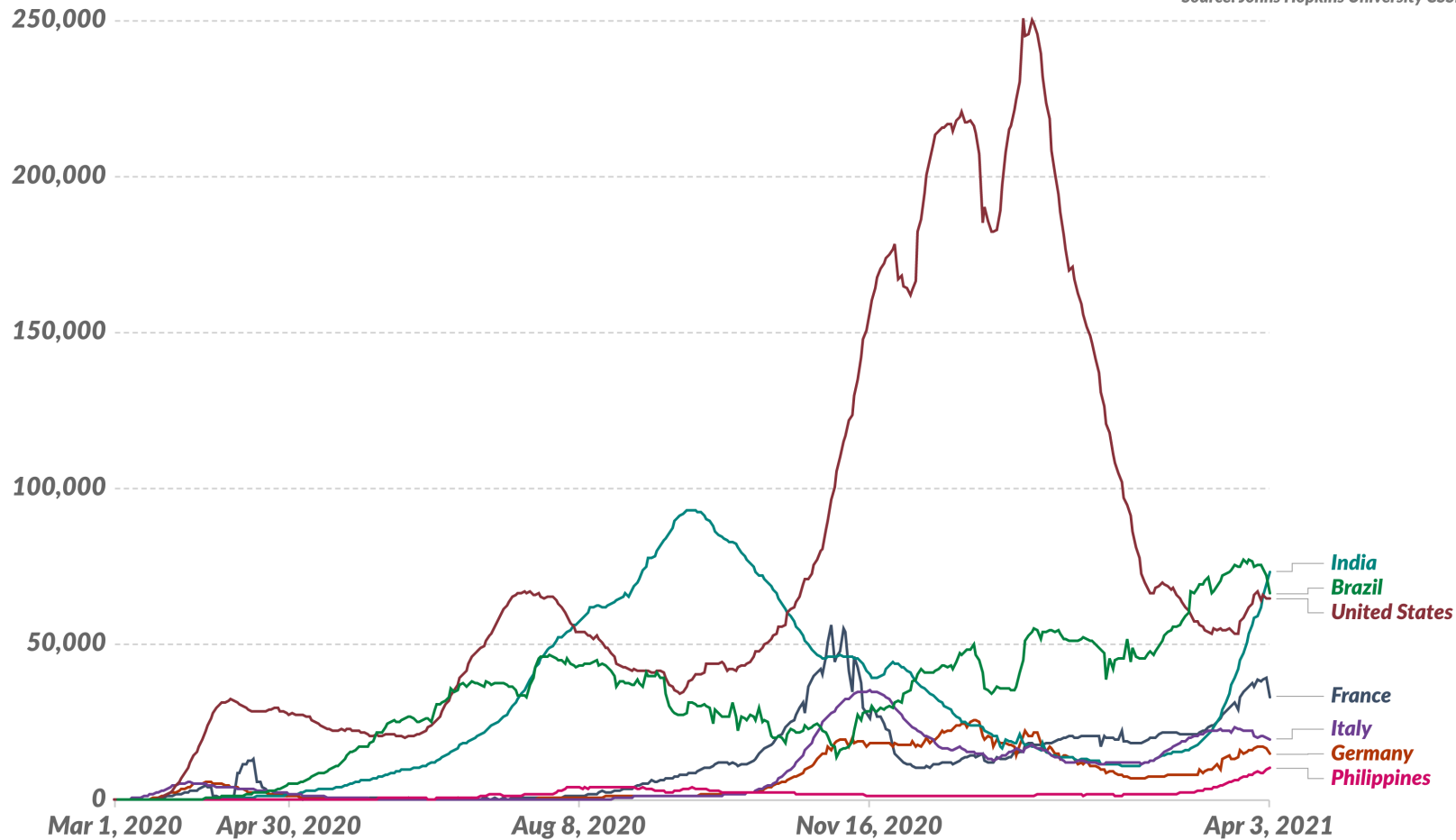
**Any person below 18 years old, those who are over 65 of age,** those with immunodeficiency, comorbidity, or other health risks, and pregnant women shall be required to remain in their residences at all times, except for obtaining essential goods and services, or for work in industries and offices or such other activities permitted in this Section.

---

# Daily new confirmed COVID-19 cases

Shown is the rolling 7-day average. The number of confirmed cases is lower than the number of actual cases; the main reason for that is limited testing.

Source: Johns Hopkins University CSSE COVID-19 Data

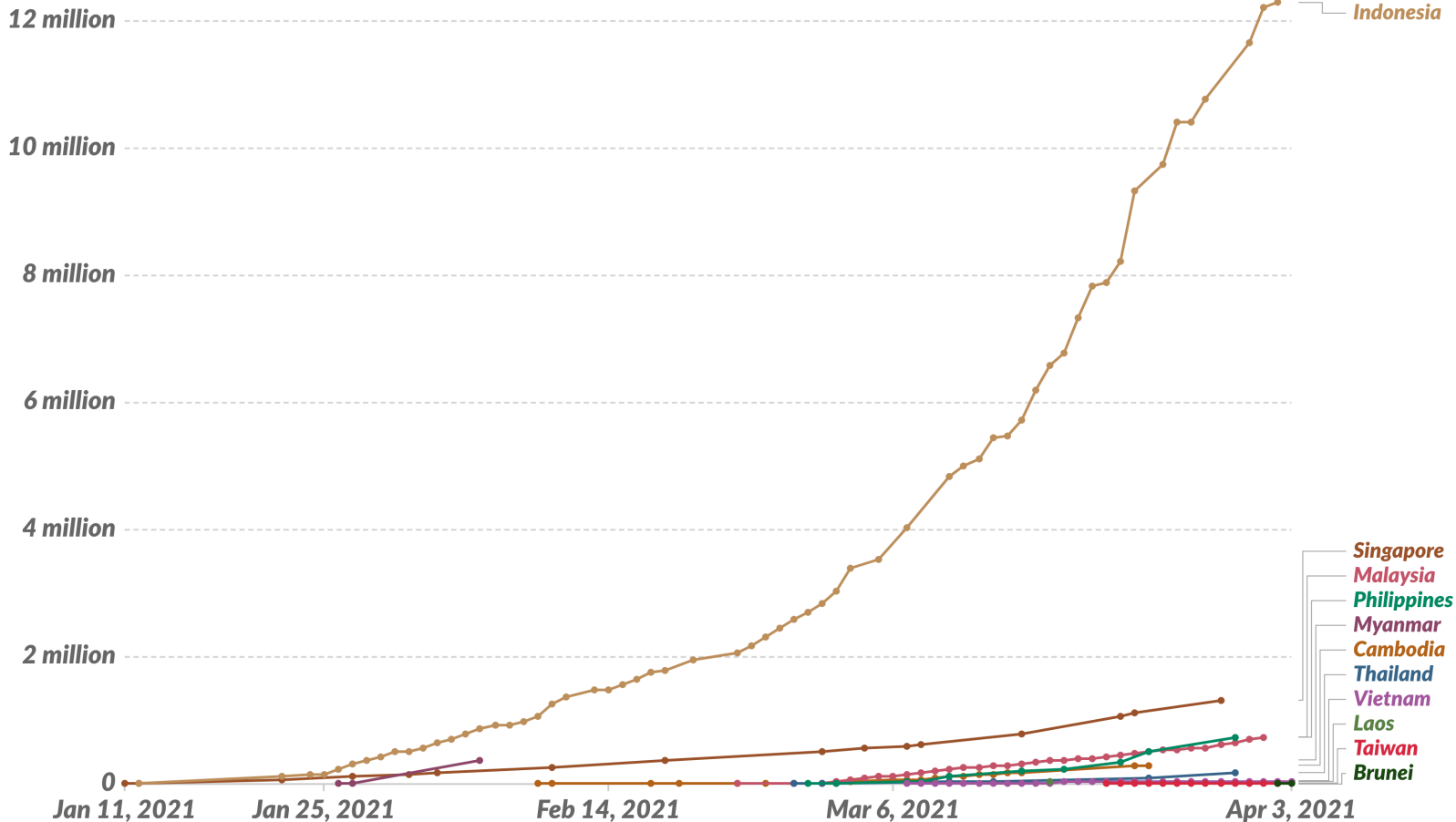


# COVID-19 vaccine doses administered

Total number of vaccination doses administered. This is counted as a single dose, and may not equal the total number of people vaccinated, depending on the specific dose regime (e.g. people receive multiple doses).

Our World  
in Data

Source: Johns Hopkins University CSSE COVID-19 Data



# PH World Ranking



	PHILIPPINES	Rank
Total Cases	795,051*	30
Active cases	135,526**	19 from 21
Cases per 1M population	715.49**	134
Case Fatality Rate	1.7%**	94 from 82

Sources: \*Johns Hopkins (2021/4/5) and \*\*WHO COVID-19 Dashboard (Accessed on 2021/4/5)

# COVID-19 Vaccine Update – 3 April 2021



## 795,320 Filipinos

*were already vaccinated with their 1st dose vaccine  
against COVID-19 within 2,669 vaccination sites in the country*

**765,871**

**Frontline  
Healthcare Workers**

**16,121**

**Seniors Citizens**

**13,288**

**Individuals  
with Comorbidity**





**WE  
HEAL  
AS  
ONE**



**April 5, 2021**